
Multiway Analysis of Epilepsy Tensors

Evrin Acar ^{a,*}, Canan Aykut-Bingol ^b, Haluk Bingol ^c, Rasmus Bro ^d,
Bülent Yener ^a

^aComputer Science Department, Rensselaer Polytechnic Institute, NY, USA

^bDepartment of Neurology, Yeditepe University, Istanbul, Turkey

^cComputer Engineering Department, Bogaziçi University, Istanbul, Turkey

^dDepartment of Food Science, Copenhagen University, Copenhagen, Denmark

ABSTRACT

Motivation: The success or failure of an epilepsy surgery depends greatly on the localization of epileptic focus (origin of a seizure). We address the problem of identification of a seizure origin through an analysis of ictal electroencephalogram (EEG), which is proven to be an effective standard in epileptic focus localization.

With a goal of developing an automated and robust way of visual analysis of large amounts of EEG data, we propose a novel approach based on multiway models to study epilepsy seizure structure. Our contributions are threefold. First, we construct an *Epilepsy Tensor* with three modes, i.e. time samples, scales and electrodes, through wavelet analysis of multi-channel ictal EEG. Second, we demonstrate that multiway analysis techniques, in particular Parallel Factor Analysis (PARAFAC), provide promising results in modeling the complex structure of an epilepsy seizure, localizing a seizure origin and extracting artifacts. Third, we introduce an approach for removing artifacts using multilinear subspace analysis and discuss its merits and drawbacks.

Results: Ictal EEG analysis of 10 seizures from 7 patients are included in this study. Our results for 8 seizures match with clinical observations in terms of seizure origin and extracted artifacts. On the other hand, for 2 of the seizures, seizure localization is not achieved using an initial trial of PARAFAC modeling. In these cases, first, we apply an artifact removal method and subsequently apply the PARAFAC model on the epilepsy tensor from which potential artifacts have been removed. This method successfully identifies the seizure origin in both cases.

Contact: acare@cs.rpi.edu

1 INTRODUCTION

Epilepsy is defined as spontaneous clinical seizures caused by paroxysmal, abnormally synchronous neuronal activity. The electrical symptoms of this abnormal activity are believed to uniquely define and reveal the mechanisms of the underlying abnormal neural function and structure. Localization of the initial seizure discharge is an attempt to find the region that generates the abnormal neural activity. Therefore, the analysis of ictal EEG (scalp or intracranial) is an effective standard for identification of an epileptic focus location.

The majority of the research devoted to automated detection of epileptic events concentrates around spike detection techniques. Although most of these techniques are based on single channel data, in Glover et al. (1989), context knowledge from 16-channel

EEG data has been incorporated in building a detection system for epileptic sharp waves. Sharp wave source localization on multi-channel EEG data has also been applied in Flanagan et al. (2002) to determine the areas of interest with epileptic activity.

The main challenge in focus localization is the contamination of EEG with artifacts. Ictal EEG, EEG data recorded during the seizure period of an epileptic patient, is often contaminated with signals originating from eye blinks, eye movements and muscle artifacts. These artifacts undermine the efforts to localize epileptic foci and understand the characteristics of a seizure. Commonly used approaches for artifact removal in ictal EEG are simple filtering techniques and statistical methods such as Independent Component Analysis (ICA) [Comon (1994)] and, lately, Canonical Correlation Analysis (CCA) [Hotelling (1936)]. The filtering methods eliminating EEG activity within certain frequencies may result in loss of significant information about seizure structure in the cases where epileptic signals and artifacts overlap in the frequency domain. Therefore, statistical approaches, especially methods based on ICA, are quite common in artifact removal literature. Some of these statistical techniques rely on the widely-accepted assumption of independence between artifacts and epileptic brain signals. Considering EEG recorded at each electrode as a linear mixture of signals originating from independent sources, independent components are extracted using ICA [Zhou and Gotman (2005); Greco et al. (2005); Urrestarazu et al. (2004); Delorme et al. (2001)]. The components corresponding to artifacts are later identified by visual inspection [Zhou and Gotman (2005); Urrestarazu et al. (2004)] or a semi-automated/automated artifact identification technique based on high-order statistics, i.e. kurtosis, entropy [Greco et al. (2005); Delorme et al. (2001)]. As an alternative to ICA, a CCA-based artifact removal approach has recently been proposed [Clercq et al. (2005)]. This technique is similar to ICA-based approaches except for the independence assumption. In Clercq et al. (2005), the underlying idea is the mutual non-correlation between artifacts and epileptic signals.

Artifact removal approaches mentioned so far focus on multi-channel EEG data arranged as a two-way dataset of recordings collected at several electrodes at different time samples. Two-way analysis methods on multi-channel EEG data, however, only allow us to capture temporal and spatial signatures, such as the ones identified by ICA and CCA-based techniques. In order to capture frequency domain information, these methods require one more step, such as feature extraction as in LeVan et al. (2006), where several features based on the spectral information content of a

*To whom correspondence should be addressed

component are extracted along with some other features to classify components as artifacts or seizures.

On the other hand, multiway analysis enables us to inspect the information content of the signal in time, frequency and electrode domain simultaneously. In neuroscience, multiway models have been initially used in studying the effect of a new drug on brain activity [Estienne et al. (2001)], where EEG data and data collected through experiments with different doses of a drug over several patients under certain conditions are arranged as a six-way array with modes: EEG, patients, doses, conditions, etc. Results demonstrate that significant information is successfully extracted from a complex drug dataset by a Tucker3 model [Tucker (1964, 1966)] rather than two-way models such as Principal Component Analysis (PCA). Multiway models have become even more popular in neuroscience with the idea of decomposing EEG data into space-time-frequency components [Miwakeichi et al. (2004)]. In Miwakeichi et al. (2004), continuous wavelet transformation (CWT) is applied on the signals recorded at each electrode and wavelet-transformed data is arranged as a three-way array with modes $time\ samples \times frequency \times electrodes$. The three-way array is then analyzed using a PARAFAC model [Harshman (1970)]. Factors in the first, second and third component matrices are used to represent the temporal, spectral and spatial signatures in EEG data, respectively. PARAFAC models with nonnegativity constraints are later used in another study on event-related potentials (ERP) to find the underlying structure of brain dynamics [Mørup et al. (2006)]. Most recently, a toolbox called ERPWAVELAB [Mørup et al. (2006)] running under MATLAB has been released for multi-channel time-frequency analysis of brain activity using EEG and MEG data. This toolbox enables the use of multiway models in the analysis of brain dynamics. These studies have also motivated the application of multiway models in understanding the structure of epileptic seizures in our previous study [Acar et al. (2006)], which, to our knowledge, has been the first to analyze epileptic EEG data using a multiway model. We have constructed an epilepsy tensor by rearranging the multi-channel ictal EEG data as a third-order tensor with modes, i.e. time samples, scales (frequency) and electrodes and studied the performance of nonlinear and multilinear models in capturing specific epilepsy dynamics. Furthermore, the performance comparison of two-way and three-way models in localizing a seizure origin has been presented and the results have suggested better focus localization using multiway models.

1.1 Our Contributions

In this extended study, we again construct a third-order tensor in the way we have demonstrated in Acar et al. (2006). While we are particularly interested in localizing the focus of a seizure, in addition to that, our goal is to identify spatial, spectral and temporal signatures of an epileptic seizure as well as an artifact. With a goal of analyzing seizure in these three domains, i.e. time, frequency and electrode, our contributions in this paper are as follows:

1. **Epileptic focus localization:** We model epilepsy tensors using a PARAFAC model and use PARAFAC components in time, frequency and electrode domain to define a seizure. We localize seizure origins based on the spatial signature of a seizure extracted by a PARAFAC model and identified by a neurologist. We have previously applied a Tucker3 model with orthogonality constraints on the component matrices as a

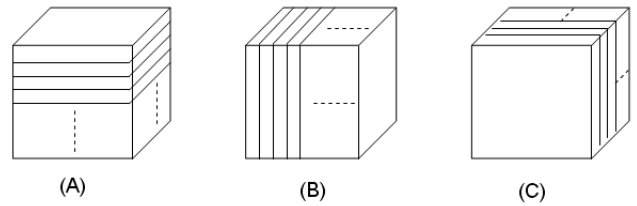


Fig. 1. (A) Horizontal Slices, (B) Vertical Slices, (C) Frontal Slices.

generalization of PCA to three-way arrays in Acar et al. (2006). However, the justification of orthogonality constraints meaning that a neural activity is orthogonal to another neural activity is unclear in neuroscience. In addition to that, interpretation of a Tucker3 model is much harder than that of PARAFAC components due to the flexibility of Tucker3 model.

2. **Artifact Extraction:** We extract artifacts using a PARAFAC model and use PARAFAC components as spectral, spatial and temporal signatures of an artifact in order to define an artifact.
3. **Artifact Removal:** Through multilinear subspace analysis, we remove artifacts such as eye movements so that remaining data does not contain any activity correlated with the artifact.
4. **Dataset:** We extend the set of patients and focus on the analysis of 10 seizures from patients with different etiological pathologies.

The organization of the paper: After a brief introduction on multiway arrays and multilinear models in Section 2, the construction and three-way analysis of an epilepsy tensor are presented in Section 3. We also demonstrate the proposed artifact extraction and removal methods in Section 3. Results, interpretations and future steps proposed for a better understanding of an epileptic seizure structure are discussed in Section 4.

2 METHODOLOGY

Multiway data analysis is an exploratory analysis tool, which captures the multilinear structures in a dataset. Standard two-way methods, e.g. Singular Value Decomposition (SVD) [Golub and Loan (1996)], commonly applied on matrices often fail to find the underlying structures in multiway arrays. Therefore, data is rearranged as a multiway array and analyzed using multiway models in numerous disciplines including chemometrics, neuroscience, computer vision, and social network analysis. In this section, we briefly introduce multiway arrays and common multiway models applied in this paper.

2.1 Background

Multiway arrays, often referred as tensors, are higher-order generalizations of vectors and matrices. Higher-order arrays are represented as $\mathbf{X} \in R^{I_1 \times I_2 \times \dots \times I_N}$, where the order of \mathbf{X} is N ($N > 2$) while a vector and a matrix is an array of order 1 and 2, respectively.

In higher-order array terminology, each dimension of a multiway array is called a mode (or a way) and the number of variables in each mode is used to indicate the dimensionality of a mode. For instance,

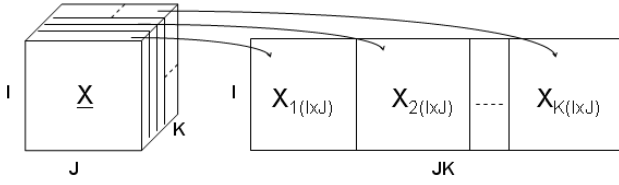


Fig. 2. Matricization of a three-way array in the first mode. A three-way array $\underline{\mathbf{X}} \in R^{I \times J \times K}$ is unfolded in the first mode and a matrix of size $I \times JK$, denoted by $\mathbf{X}_{(1)}$ is formed. Subscript in $\mathbf{X}_{(i)}$ indicates the mode of matricization.

$\underline{\mathbf{X}} \in R^{I_1 \times I_2 \times \dots \times I_N}$ is a multiway array with N modes (called N -way array or N^{th} -order tensor) with I_1, I_2, \dots dimensions in the first, second, ... etc. mode, respectively.

A multiway array can be rearranged as a two-way array by unfolding the slices defined in Figure 1 in a certain mode as shown in Figure 2. This operation is called matricization (or unfolding / flattening). Through matricization, matrix multiplication is generalized to multiway arrays. The n -mode product of a multiway array $\underline{\mathbf{X}} \in R^{I_1 \times I_2 \times \dots \times I_n \times \dots \times I_N}$ by a matrix $\mathbf{U} \in R^{J_n \times I_n}$ is denoted by $\underline{\mathbf{X}} \times_n \mathbf{U}$, and it is a multiway array of size $I_1 \times I_2 \times \dots \times I_{n-1} \times J_n \times I_{n+1} \times \dots \times I_N$. The n -mode product is defined in Lathauwer et al. (2000) as:

$$(\underline{\mathbf{X}} \times_n \mathbf{U})_{i_1 i_2 \dots i_{n-1} j_n i_{n+1} \dots i_N} = \sum_{i_n=1}^{I_n} x_{i_1 i_2 \dots i_n} u_{j_n i_n} \quad (1)$$

where $x_{i_1 i_2 \dots i_n}$ and $u_{j_n i_n}$ represent the entries of an N -way and a two-way array, respectively.

2.2 Multilinear Models

The most common multiway models in literature are PARAFAC and Tucker3 models. These models both capture the multilinear structure in data by extracting components that are linear combinations of the original variables. These components are then used to interpret the underlying information content of the data. We briefly discuss the similarity and differences of these two models.

2.2.1 Parallel Factor Analysis (PARAFAC) is the extension of bilinear factor models to multilinear data. Mathematically, a PARAFAC model can be represented as the decomposition of a tensor as the linear combination of rank-1 tensors. Let $\underline{\mathbf{X}} \in R^{I \times J \times K}$ be a three-way array. R -component PARAFAC model on $\underline{\mathbf{X}}$ is given by

$$\underline{\mathbf{X}} = \sum_{r=1}^R a_r \circ b_r \circ c_r + \underline{\mathbf{E}} \quad (2)$$

where a_i, b_i and c_i indicate the i^{th} column of component matrices $\mathbf{A} \in R^{I \times R}$, $\mathbf{B} \in R^{J \times R}$ and $\mathbf{C} \in R^{K \times R}$, respectively. $\underline{\mathbf{E}} \in R^{I \times J \times K}$ is a three-way array containing the residuals. \circ denotes the outer product of vectors. Vector outer product is defined as follows. Let \mathbf{x}, \mathbf{y} and \mathbf{z} be column vectors of size $I \times 1$ and $J \times 1$ and $K \times 1$ and $\underline{\mathbf{W}}$ is a tensor of size $I \times J \times K$, then $\underline{\mathbf{W}} = \mathbf{x} \circ \mathbf{y} \circ \mathbf{z}$ if and only if $w_{ijk} = x_i y_j z_k$. The illustration of a 2-component PARAFAC model on a three-way dataset is also shown in Figure 3.

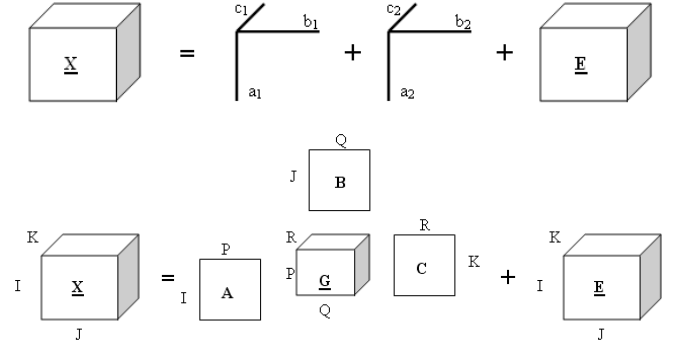


Fig. 3. Top: 2-component PARAFAC model, where a three-way array $\underline{\mathbf{X}}$ is expressed as the sum of two rank-1 tensors and error terms. a_i, b_i and c_i are the i^{th} components in the first, second and third mode, respectively. $\underline{\mathbf{E}}$ is a three-way array containing the residuals. **Bottom:** (P, Q, R) -component Tucker3 model, where a three-way array $\underline{\mathbf{X}} \in R^{I \times J \times K}$ is modeled with component matrices $\mathbf{A} \in R^{I \times P}$, $\mathbf{B} \in R^{J \times Q}$ and $\mathbf{C} \in R^{K \times R}$ in the first, second and third mode, respectively. $\underline{\mathbf{G}} \in R^{P \times Q \times R}$ is the core array and $\underline{\mathbf{E}} \in R^{I \times J \times K}$ contains the error terms.

2.2.2 Tucker3 is a more flexible multiway model compared to a PARAFAC model and often called three-way PCA. The flexibility of a Tucker3 model is due to the existence of a core array, which enables the interaction of each component in each mode with all components in other modes. On the other hand, in a PARAFAC model, a component in a certain mode can be related to a single component in another mode, i.e. the one with the same index. (P, Q, R) -component Tucker3 model on a three-way array $\underline{\mathbf{X}} \in R^{I \times J \times K}$ is given by:

$$x_{ijk} = \sum_{p=1}^P \sum_{q=1}^Q \sum_{r=1}^R g_{pqr} a_{ip} b_{jq} c_{kr} + e_{ijk} \quad (3)$$

where $\mathbf{A} \in R^{I \times P}$, $\mathbf{B} \in R^{J \times Q}$ and $\mathbf{C} \in R^{K \times Q}$ are the component matrices corresponding to the first, second and third modes, respectively. $\underline{\mathbf{G}} \in R^{P \times Q \times R}$ is the core array and $\underline{\mathbf{E}} \in R^{I \times J \times K}$ contains the residuals. The illustration of a Tucker3 model on a three-way array is given in Figure 3.

In a PARAFAC model, we extract the same number of components in each mode. When one component is identified as an artifact, for instance in the analysis of an epilepsy tensor, that particular component shows the signature of an artifact in time domain in the first mode, in frequency domain in the second mode and in electrode domain in the third mode. Therefore, we actually identify an artifact using the rank-1 tensor corresponding to it. However, a Tucker3 model decomposes the data using a full-core array, $\underline{\mathbf{G}}$, which makes the interpretation of a Tucker3 model more difficult than a PARAFAC model. Any component can interact with any component in another mode in a Tucker3 model, e.g. a component identified as an artifact using the component in electrode mode can have any of the frequency signatures captured by the components in the second mode. This relation is quantified by the core elements and can be interpreted using the core array, which is rather complicated than the interpretation of a PARAFAC model. In

addition to that, the main problem might be the rotational ambiguity in a Tucker3 model. Unlike PARAFAC, a Tucker3 model cannot determine component matrices uniquely. When a component matrix is rotated by a rotation matrix, it is possible to apply the inverse of the rotation matrix to the core and still obtain the same model fit. Therefore, a Tucker3 model can determine component matrices only up to a rotation. Consequently, a PARAFAC model is a much more restricted and a simpler model with certain uniqueness properties compared to a Tucker3 model.

3 THREE-WAY ANALYSIS OF EPILEPSY TENSORS

Multi-channel EEG consists of a set of signals recorded at several electrodes located on the scalp. We construct an *Epilepsy Tensor* from multi-channel ictal EEG data for each seizure and model using multiway models for artifact extraction, artifact removal and seizure localization. During our analysis, we use PLSToolbox [Eigenvector (2006)] for multiway models and EEGLab [Delorme and Makeig (2004)] for topographic maps across the scalp.

3.1 Dataset

We studied scalp EEG recordings of 10 seizures from 7 patients with different pathology substrates: tumor 4; mesial temporal sclerosis 2; cortical dysplasia 1. Ictal EEG recordings were done with long term video EEG monitoring with scalp electrodes in the epilepsy monitoring units of Yeditepe University Hospital and Marmara University. The recordings were obtained by Telefactor Beehave and Millenium video-EEG monitoring systems with 32 channels. The recording of EEG with referential electrode Cz was used for computational analyses.

The duration of ictal EEG corresponding to each seizure, sampling frequencies and the number of electrodes are summarized in Table 1.

3.2 Epilepsy Tensor Construction and Preprocessing

Multi-channel EEG data originally forms a matrix of time samples by electrodes. We center across and scale within the electrode mode before we proceed with the analysis. Then we apply continuous wavelet transformation on the signals recorded at each electrode in order to identify the frequency component available at each time sample. As a mother wavelet, we make use of Mexican-hat wavelet. Our selection of the mother wavelet is based on a previous work [Latka et al. (2003)] showing that a Mexican-hat wavelet captures epileptic events well. We have not studied the performance of other wavelets such as complex Morlet used in modeling brain signals in Miwakeichi et al. (2004) and Mørup et al. (2006) and it is a future research direction to be explored. After computing wavelet coefficients, we downsample time samples by a certain factor in order to reduce the space complexity of the analysis. The downsampling factors used in the analysis are given in Table 1.

Wavelet transformation of a signal from a single electrode forms the frontal slice corresponding to a particular electrode. Similar to the way described in Miwakeichi et al. (2004), we construct our dataset as a three-way array, $\underline{\mathbf{X}} \in R^{I \times J \times K}$ with modes: time samples, scales and electrodes (Figure 4). Each entry of $\underline{\mathbf{X}}$ denoted by x_{ijk} represents the square of the absolute value of wavelet coefficient at i^{th} electrode for j^{th} scale at k^{th} time sample. Scales and frequencies are often used interchangeably in this paper.

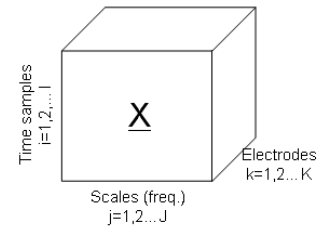


Fig. 4. Epilepsy Tensor. $\underline{\mathbf{X}} \in R^{I \times J \times K}$ represents the multi-channel ictal EEG data which is transformed by continuous wavelet transformation using a Mexican-hat wavelet and arranged as a three-way array. Each entry of $\underline{\mathbf{X}}$, x_{ijk} corresponds to the square of the absolute value of a wavelet coefficient at i^{th} time sample, j^{th} scale and k^{th} electrode.

However, they are different. Scale mode reveals the frequency information but scales are inversely proportional to frequencies.

Before multiway analysis of $\underline{\mathbf{X}}$, data is scaled in scales mode in order to capture the activity in all frequencies rather than only at low frequencies with relatively much higher energy than higher frequencies. Scaling a three-way array within one mode is different than scaling in two-way datasets. Unlike matrices where columns or rows are scaled, in three-way case, whole matrices have to be scaled [Bro and Smilde (2003)]. For instance, while scaling $\underline{\mathbf{X}}$ within scales mode, vertical slices are scaled.

3.3 Artifact Extraction

Once the three-way array $\underline{\mathbf{X}} \in R^{I \times J \times K}$ with modes: time samples, scales and electrodes, is constructed and preprocessed, we model $\underline{\mathbf{X}}$ using an R-component PARAFAC model as in Equation 2. PARAFAC is originally based on Cattell's principle of Parallel Proportional Profiles [Cattell (1944)]. The idea behind Parallel Proportional Profiles is that if the same factors are present in two samples under different conditions, then each factor in the first sample is expected to have the same pattern in the second sample but profiles of the factors will be scaled depending on the conditions. Later, the three-mode interpretation of proportional profiles criterion was developed and foundations of a PARAFAC model were introduced by Harshman (1970). When we take a closer look at the idea of parallel proportional profiles, we can observe that a signal from an electrode can be referred to as a sample. These samples are generated by certain underlying sources with spectral, spatial as well as temporal signatures specific to the sources. Each electrode, thus, has a coefficient representing the contribution of the source to the signal (or sample) recorded at that particular electrode. Our aim is to identify the sources, such as an eye artifact, a muscle artifact or an epileptic activity generating a seizure, based on these signatures and relative coefficients of electrodes.

An R-component PARAFAC model on $\underline{\mathbf{X}}$ extracts the components a_i , b_i and c_i , for $i=1, 2, R$, where these components indicate the signatures of sources in time, frequency and electrode domain, respectively as shown in Figure 5. Consequently, a PARAFAC model can serve as an artifact extraction method by identifying patterns indicative of artifacts. In Figure 5, signatures captured by the first component characterizes an eye -artifact. a_1 indicates the times of the artifact. b_1 shows that eye-artifact observed at the specified times (those with high coefficients in a_1) has a high-scale

Table 1. Dataset of multi-channel ictal EEG. 100 scales corresponding to frequencies in the frequency band of 0.5-50Hz are used.

SeizureId	PatientId	Sampling Freq. (Hz)	Duration of Ictal EEG (sec.)	Downsampling Factor	Number of Electrodes	Size of Epilepsy Tensor
1	1	200	47	10	17	$940 \times 100 \times 17$
2	2	200	100	10	17	$2000 \times 100 \times 17$
3	3	200	61	10	18	$1220 \times 100 \times 18$
4	4	200	60	10	18	$1200 \times 100 \times 18$
5	4	200	74	10	18	$1480 \times 100 \times 18$
6*	4	200	63	10	18	$1260 \times 100 \times 18$
7*	4	200	76	10	18	$1520 \times 100 \times 18$
8	5	400	86	20	18	$1720 \times 100 \times 18$
9	6	200	17	1	18	$3400 \times 100 \times 18$
10	7	400	77	10	18	$3080 \times 100 \times 18$

*These are the seizures on which artifact removal is applied.

signature indicating a low-frequency content (1.25-2.5Hz). Finally, c_1 localizes the artifact around electrodes F_{P1} and F_{P2} . Examples of artifact extraction are also given in Figure 7.

3.4 Seizure Origin Localization

By pursuing the same discussion on Cattell’s idea, when one of the underlying sources in the signals recorded by the electrodes is an epileptic seizure, we can argue that one or more of PARAFAC components can model a seizure in the same way an artifact is modeled. Similar to an artifact, a seizure also has a signature in time, frequency and electrode domain. Once these signatures are extracted using a PARAFAC model, then the signature of a seizure in the electrode domain can be used to localize the seizure origin.

Therefore, we can also employ PARAFAC as a model for localizing a seizure origin. We observe in Figure 5 that the second component in time samples mode, a_2 , shows an ongoing activity in ictal period. When the second component in the second mode, b_2 , is examined, we detect that this ongoing activity in ictal period takes place in low-scales indicating a rather high-frequency content (12.5-25Hz) compared to that of the first component. Eventually, c_2 suggests that the activity with described characteristics takes place particularly around electrodes T_4 and T_6 . In fact, this activity is a seizure and the component of a PARAFAC model in the electrode mode localizes the seizure origin. We illustrate more examples of seizure origin localization in Figure 7.

3.5 Artifact Removal

When artifacts account for most of the variation during ictal period, seizure signatures cannot be captured by PARAFAC components. In this case, we suggest that the variation due to artifacts are removed from the data and $\underline{\mathbf{X}}_{NEW}$ contaminated with less artifacts is modeled using a PARAFAC model.

In order to understand the underlying structure of data, we model $\underline{\mathbf{X}}$ using a Tucker3 model because a Tucker3 model, unlike the PARAFAC model, is known to reflect the main subspace variation in each mode assuming a multilinear structure. We fit a Tucker3 model as in Equation 3 with large number of components in each mode such that we extract enough components to capture most of the variation in data (over 75%). Using a Tucker3 model with orthonormality constraints in each mode, we model the data with

component matrices \mathbf{A} , \mathbf{B} and \mathbf{C} corresponding to time samples, scales and electrode mode, respectively and having orthonormal columns. Components in all modes are extracted in decreasing order of captured variance just like in SVD on matrices. Then based on visual inspection of the components in the electrode mode, first N components with characteristics of a potential artifact are identified. Our goal is to remove the activity associated with these potential artifacts. Similar to the underlying idea in interference subtraction based on subspace analysis in Parra et al. (2005), we make use of multilinear subspace analysis to remove the artifacts. We project the data onto the nullspace of the space spanned by the components characterizing an artifact. The steps of the artifact removal method are described more formally as follows:

1. Fit a Tucker3 model to $\underline{\mathbf{X}} \in R^{I \times J \times K}$ with component numbers large enough to capture most of the variation in data. (Suppose that modes of $\underline{\mathbf{X}}$ are as given in Figure 4).
2. Pick N components in electrodes mode, which are identified as potential artifacts by visual inspection.
3. Form matrix $\mathbf{Q} \in R^{K \times N}$ with N columns using the N components picked in Step 2.
4. Construct an orthogonal projector, \mathbf{P}_{M^\perp} that projects onto the nullspace of \mathbf{Q} , namely onto M^\perp , where M is an N -dimensional subspace of R^K and the columns of \mathbf{Q} are the bases for M :

$$\mathbf{P}_{M^\perp} = \mathbf{I} - \mathbf{Q}\mathbf{Q}^+ \quad (4)$$

where \mathbf{I} denotes the identity matrix and \mathbf{Q}^+ represents the pseudoinverse of \mathbf{Q} .

5. Compute $\underline{\mathbf{X}}_{NEW} \in R^{I \times J \times K}$, which is the projection of $\underline{\mathbf{X}}$ onto M^\perp as:

$$\underline{\mathbf{X}}_{NEW} = \underline{\mathbf{X}} \times_3 \mathbf{P}_{M^\perp} \quad (5)$$

where \times_3 denotes the product of tensor $\underline{\mathbf{X}}$ with matrix \mathbf{P}_{M^\perp} in electrode mode.

This artifact removal scheme takes out the effect of an artifact across all frequencies during ictal period from $\underline{\mathbf{X}}$. After removing

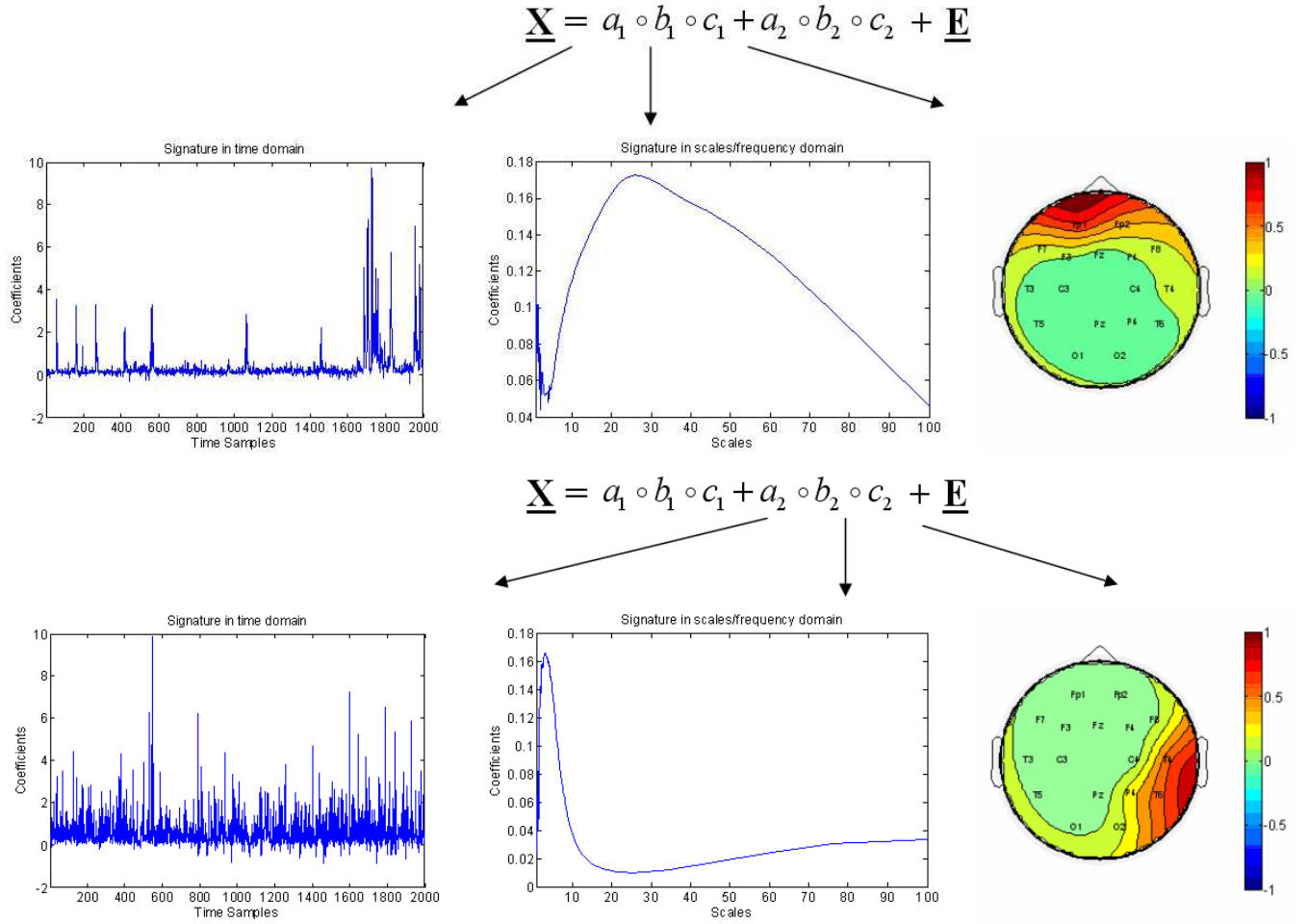


Fig. 5. 2-component PARAFAC model on an epilepsy tensor $\underline{\mathbf{X}}$ for a particular seizure. We demonstrate the modeling of an epilepsy tensor for one of the seizures by a 2-component PARAFAC model, where the first component corresponds to an eye-artifact while the second component represents a seizure. **Top:** Temporal (a_1), spectral (b_1) and spatial signatures (c_1) of an eye-artifact. a_1 represents the coefficients of time samples, b_1 represents the coefficients of scales. Since there is a peak in higher scales on the plot of b_1 , it indicates that this artifact takes place at lower frequencies. c_1 contains the coefficients of electrodes. These coefficients are demonstrated on a colormap using EEGLab Delorme and Makeig (2004). **Bottom:** Temporal (a_2), spectral (b_2) and spatial signatures (c_2) of a seizure. Similar to the first component, a_2 represents the coefficients of time samples, b_2 represents the coefficients of scales. There is a peak in lower scales on the figure corresponding to b_2 , which indicates that seizure takes place at higher frequencies. Finally, c_2 contains the coefficients of electrodes, which are used to localize seizure around electrodes T_4 and T_6 .

the artifacts, we remodel $\underline{\mathbf{X}}_{NEW}$ using a PARAFAC model and use PARAFAC components to identify the seizure origin and inspect spatial, spectral and temporal signatures of the remaining artifacts and seizure. While the artifact removal process enables the localization of seizure, after artifact removal, signatures of seizures in scale mode suggest that seizures have very low frequency component. On the other hand, we consistently observe seizure activity at high frequencies (12.5-50Hz) for the seizures where artifact removal is not needed. We summarize the whole process of multiway analysis of multi-channel ictal EEG in Figure 6.

4 DISCUSSIONS

We construct an epilepsy tensor for each seizure shown in Table 1 and analyze using the process summarized in Figure 6. When the components extracted by a PARAFAC model are visually inspected, we observe that:

1. In patients with tumors, seizure localization is restricted to a smaller area and the concordance with visual analysis is high. Artifact extraction on ictal EEG of these patients is also well correlated with clinical observations.
2. In patients with mesial temporal sclerosis, lateralization is well defined but localization is more widespread.

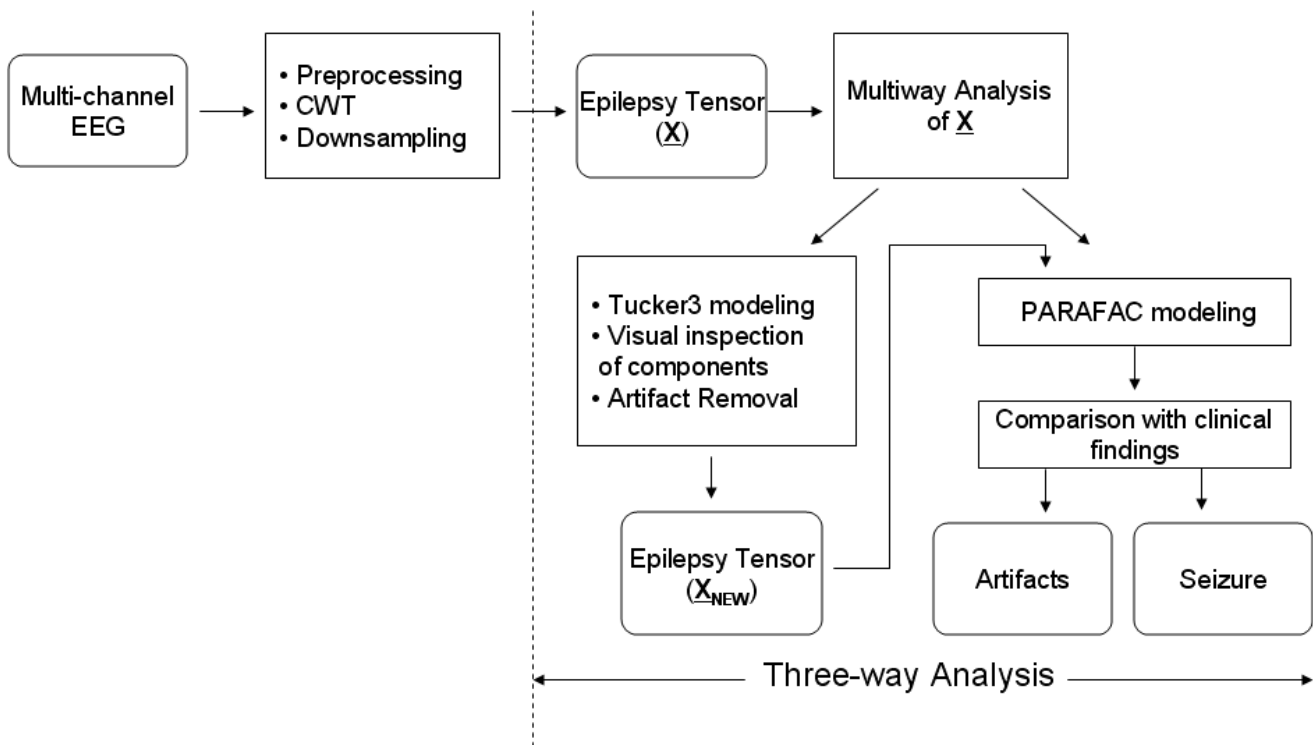


Fig. 6. Multiway analysis of multi-channel Ictal EEG. After the collection of multi-channel EEG data from epileptic patients, we normalize the data and construct a three-way \underline{X} called an **Epilepsy Tensor** through wavelet transformation. \underline{X} is then downsampled and scaled in scales mode before multiway analysis. Preprocessed three-way array is modeled using a PARAFAC model for artifact extraction and localization of epileptic focus. Finally, PARAFAC components are compared with clinical findings of epilepsy patients. In the case of artifact removal, preprocessed three-way array is first modeled using a Tucker3 model to detect potential artifacts. \underline{X}_{NEW} is formed as a result of artifact removal and \underline{X}_{NEW} is then modeled using a PARAFAC model to extract the signatures of an artifact and a seizure.

- Artifact removal helps to localize the seizure in the patient with cortical dysplasia. This patient has several seizures and the localization of the seizure is achieved for two of his/her seizures after the removal of artifacts.

The visual identification of a seizure onset and its localization has some difficulties. Ictal EEG's are frequently contaminated with movement and muscle artifacts that complicate the analysis of seizure localization and onset. Our multilinear approach and multiway-model based method give us promising results in seizure analysis. Not only the detection of the artifacts but also the localization of all seizures are correlated with the visual analysis. Another observation in this study is that the results of multiway analysis of ictal EEG of tumor patients are more precise.

The development of an automated system capable of localizing epileptic focus would strongly affect the outcome of epilepsy surgeries. Removing or extracting artifacts and exploring the underlying brain dynamics in a seizure are also as crucial as seizure origin localization. They would improve not only the accuracy of the focus localization but also the understanding of the complex structure of epilepsy, which has not yet been fully discovered. Although scalp EEG recordings have limitations in detection and localization of seizure onset, we should advance scalp recording techniques with computer analysis. Multilinear models on scalp EEG recordings show promising results in terms

of seizure focus localization and artifact extraction. Experimental results demonstrate that using multilinear models, we can get the definitions of an artifact and a seizure. These definitions are formed by the spectral, spatial and temporal signatures extracted by multiway analysis of multi-channel EEG data arranged as a three-way, named as an Epilepsy Tensor. Based on the accuracy of multilinear models, we conclude that the epilepsy tensor represents the multilinear structure of ictal EEG.

Nevertheless, there still exist many research directions for improving and generalizing the results of this study. First of all, we have so far studied whether multilinear models can be used to model an epileptic seizure using the clinical feedback from neurologists. On the other hand, for a fully automated system, automated detection of artifacts and seizures are essential. Secondly, we need to investigate what other information is removed during an artifact removal process via multilinear subspace analysis in addition to the artifact itself and how this process affects the signatures of the remaining artifacts and a seizure. Another investigation area is the correlation between different pathological substrates and neural networks involved in the seizures, e.g. more precise results on tumor patients. All these future studies are based on the extension of this study on a larger set of patients with different etiological pathologies.

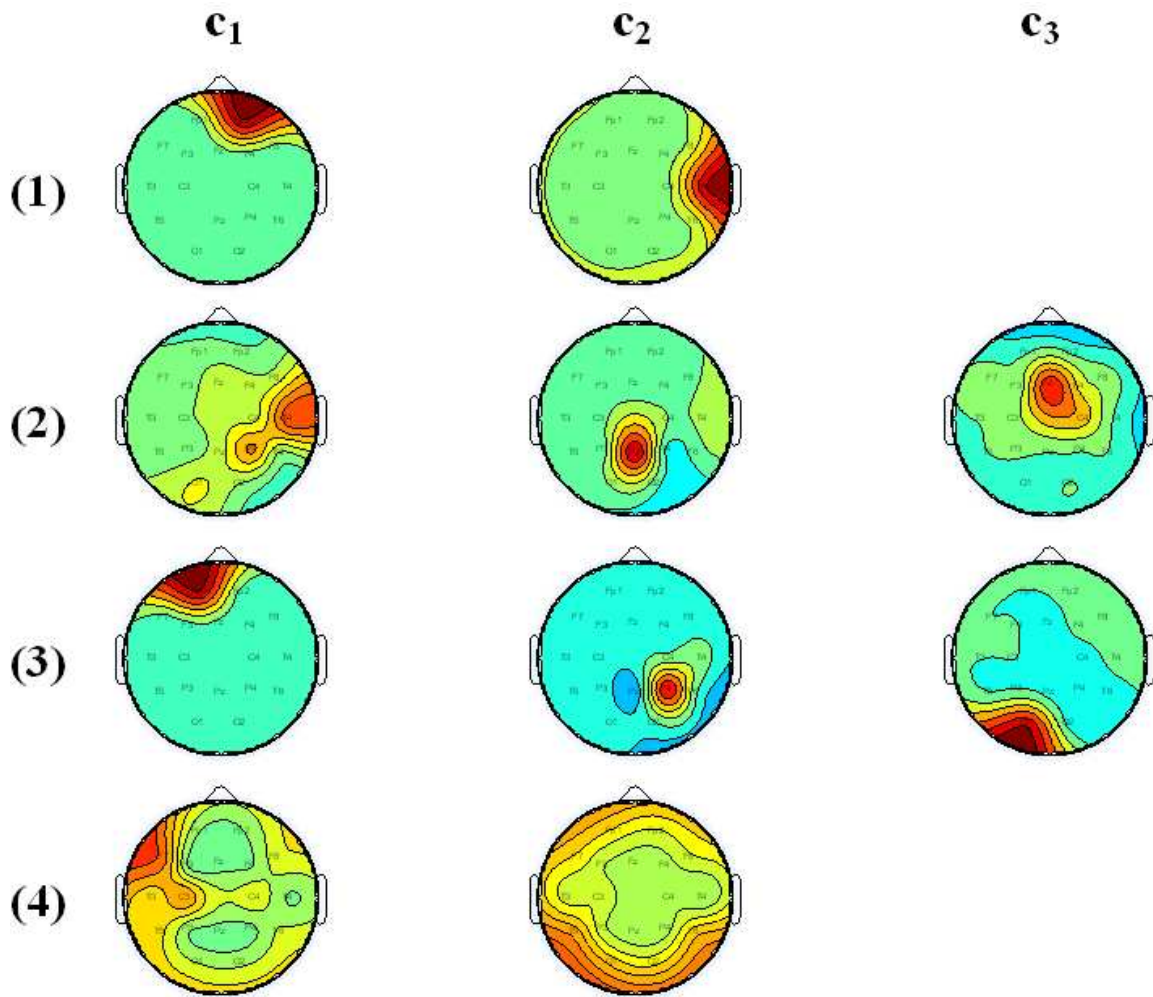


Fig. 7. Some illustrative examples of artifact extraction and seizure origin localization. We present our results corresponding to the electrode mode for four of the seizures when they are modeled using a PARAFAC model. Color scales in the figures are the same as the scale in Figure 5. c_1 , c_2 and c_3 stands for the first, second and third component in the electrode mode, respectively. We have not shown the signatures in other modes because of space limitations. The number of components in a PARAFAC model are determined by the help of certain criteria [Bro and Kiers (2003)]. (1) Seizure 1. First component represents an eye-artifact while the second component localizes the seizure. (2) Seizure 8. First component shows the seizure origin and the second component corresponds to an artifact, which has a low frequency signature. The third component cannot be visually identified. (3) Seizure 7. This is one of the examples where artifact removal is applied. The components are the PARAFAC components extracted after artifact removal. While the first and third components are the artifacts, the second component represents the seizure. (4) Seizure 10. The first component localizes the seizure around F_7 and C_3 while the second component corresponds to an artifact.

REFERENCES

- ACAR, E., BINGOL, C. A., BINGOL, H., AND YENER, B. 2006. Computational analysis of epileptic focus localization. In *Proc. of The Fourth IASTED International Conference on Biomedical Engineering*.
- BRO, R. AND KIERS, H. A. L. 2003. A new efficient method for determining the number of components in parafac models. *J. of Chemometrics* 17, 5, 274–286.
- BRO, R. AND SMILDE, A. K. 2003. Centering and scaling in component analysis. *J. of Chemometrics* 17, 1, 16–33.
- CATTELL, R. B. 1944. Parallel proportional profiles and other principles for determining the choice of factors by rotation. *Psychometrika* 9, 267–283.
- CLERCQ, W. D., VERGULT, A., VANRUMSTE, B., HEES, J. V., PALMINI, A., PAESSCHEN, W. V., AND HUFFEL, S. V. 2005. A new muscle artifact removal technique to improve the interpretation of the ictal scalp electroencephalogram. *Proc. of the 2005 IEEE Engineering in Medicine and Biology 27th Annual Conference*.
- COMON, P. 1994. Independent component analysis - a new concept? *Signal Processing* 36, 287–314.
- DELORME, A. AND MAKEIG, S. 2004. Eeglab: an open source toolbox for analysis of single-trial eeg dynamics including independent component analysis. *J. of Neuroscience Methods* 134, 1, 9–21.
- DELORME, A., MAKEIG, S., AND SEJNOWSKI, T. 2001. Automatic artifact rejection for eeg data using high-order statistics and independent component analysis. *Proc. of the 3rd International Workshop on ICA*, 457–462.
- EIGENVECTOR, R. 2006. P1stoolbox. In <http://www.eigenvector.com/>.
- ESTIENNE, F., MATTHIJS, N., MASSART, D. L., RICOUX, P., AND LEIBOVICI, D. 2001. Multi-way modelling of high-dimensionality electroencephalographic data. *Chemometrics Intell. Lab. Systems* 58, 1, 59–72.
- FLANAGAN, D., AGARWAL, R., AND GOTMAN, J. 2002. Computer-aided spatial classification of epileptic spikes. *J. Clin. Neurophysiol.* 19, 2, 125–135.
- GLOVER, J., RAGHAVAN, N., KTONAS, P., AND FROST, J. 1989. Context-based

-
- automated detection of epileptogenic sharp transients in the eeg: Elimination of false positives. *IEEE Trans. Biomed. Eng.* 36, 5, 519–527.
- GOLUB, G. H. AND LOAN, C. F. V. 1996. *Matrix Computations*. The Johns Hopkins University Press, Baltimore, MD.
- GRECO, A., MAMMONE, N., MORABITO, F., AND VERSACI, M. 2005. Semi-automatic artifact rejection procedure based on kurtosis, renyi's entropy and independent component scalp maps. *International Journal of Biomedical Sciences (IJBS)* 1, 1, 12–16.
- HARSHMAN, R. A. 1970. Foundations of the parafac procedure: models and conditions for an 'explanatory' multi-modal factor analysis. *UCLA working papers in phonetics* 16, 1–84.
- HOTELLING, H. 1936. Relations between two sets of variates. *Biometrika* 28, 3, 321–377.
- LATHAUWER, L. D., MOOR, B. D., AND J. VANDEWALLE. 2000. A multilinear singular value decomposition. *SIAM J. Matrix Anal. Appl.* 21, 4, 1253–1278.
- LATKA, M., WAS, Z., KOZIK, A., AND WEST, B. J. 2003. Wavelet analysis of epileptic spikes. *Phys. Rev. E. Stat. Nonlin. Soft. Matter Phys.* 67, 5, 105–122.
- LEVAN, P., URRESTARAZU, E., AND GOTMAN, J. 2006. A system for automatic artifact removal in ictal scalp eeg based on independent component analysis and bayesian classification. *Clin. Neurophysiol.* 117, 4, 912–927.
- MIWAKEICHI, F., MARTNEZ-MONTES, E., VALDS-SOSA, P., NISHIYAMA, N., MIZUHARA, H., AND YAMAGUCHI, Y. 2004. Decomposing eeg data into space-time-frequency components using parallel factor analysis. *NeuroImage* 22, 3, 1035–1045.
- MØRUP, M., HANSEN, L. K., AND ARNFRED, S. M. 2006. ERPWAVELAB a toolbox for multi-channel analysis of time-frequency transformed event related potentials. (Preprint) accepted for publication in *Journal of Neuroscience Methods*.
- MØRUP, M., HANSEN, L. K., HERMANN, C. S., PARNAS, J., AND ARNFRED, S. M. 2006. Parallel factor analysis as an exploratory tool for wavelet transformed event-related EEG. *NeuroImage* 29, 3, 938–947.
- PARRA, L. C., SPENCE, C. D., GERSON, A. D., AND SAJDA, P. 2005. Recipes for linear analysis of eeg. *NeuroImage* 28, 2, 326–341.
- TUCKER, L. R. 1964. The extension of factor analysis to three-dimensional matrices. In *Contributions to Mathematical Psychology*. Holt, Rinehart and Winston, New York, 110–182.
- TUCKER, L. R. 1966. Some mathematical notes on three-mode factor analysis. *Psychometrika* 31, 279–311.
- URRESTARAZU, E., IRIARTE, J., ALEGRE, M., VALENCIA, M., VITERI, C., AND ARTIEDA, J. 2004. Independent component analysis removing artifacts in ictal recordings. *Epilepsia* 45, 9, 1071–1078.
- ZHOU, W. AND GOTMAN, J. 2005. Removing eye-movement artifacts from the eeg during the intracarotid amobarbital procedure. *Epilepsia* 46, 3, 409–414.